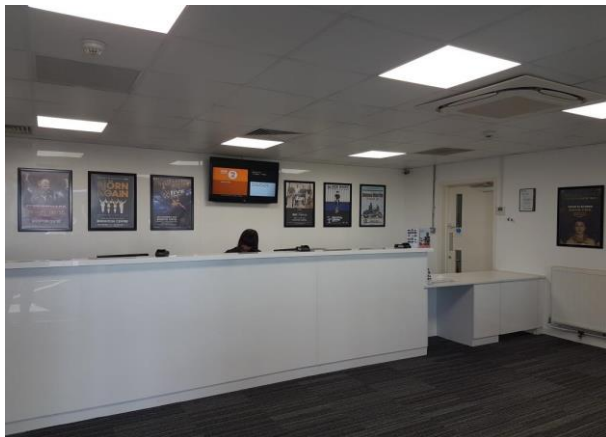


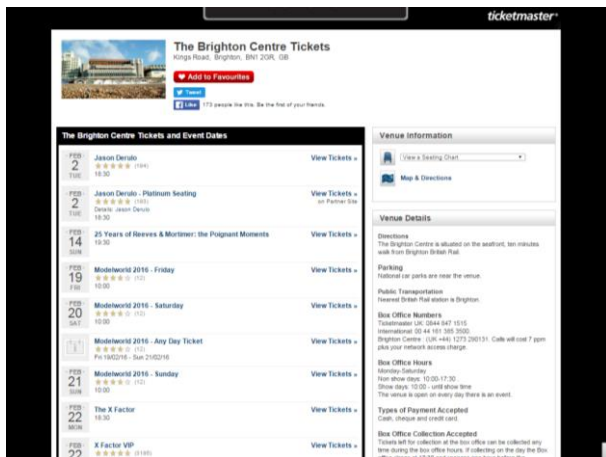
Access to the Brighton Centre



Booking Tickets & Accessible Seating



You can book tickets by going into the Brighton Centre Box Office or on the Ticketmaster website



Use this link:
<http://bit.ly/1MVheri>



If you need accessible seating or a free companion ticket, please call: 01273 292 695



There are some wheelchair spaces. Call as early as you can to book these



If you are Deaf or have trouble hearing we have a hearing loop in the auditorium. For details call 01273 292 695, you can use Relay UK - or email brightoncentre@brighton-hove.gov.uk



If you are blind or have trouble seeing you might be able to have a seat closer to the stage.

Call 01273 292 695 before you book tickets to ask about this

How Can I Access the Box Office

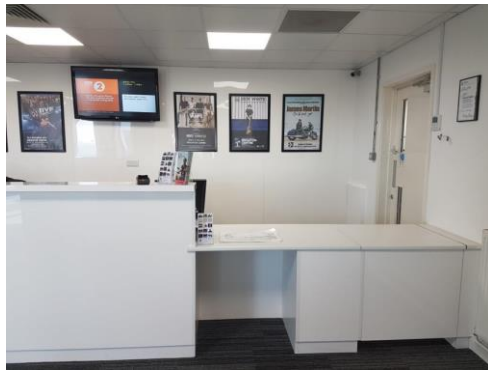


The Box Office is on the ground floor at the front of the venue and is fully accessible:

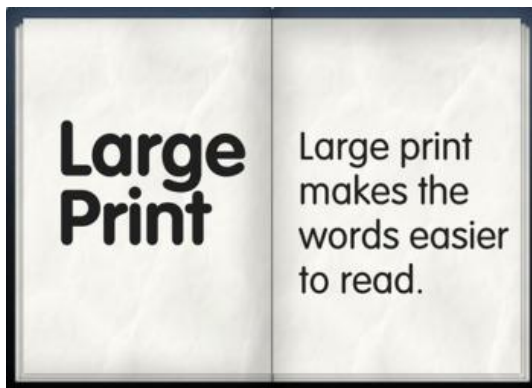




A flat door



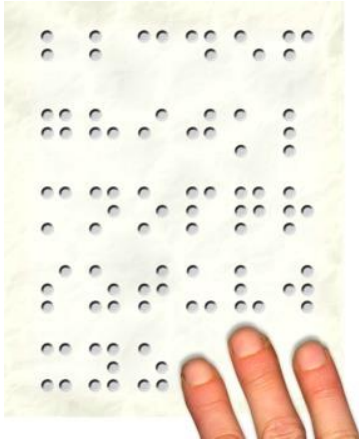
A low level counter



Information in large type on request



An induction loop



Information in Braille on request – this needs to be requested in advance and you may have to wait for it to be done



A magnifying glass

Getting to the venue

 	<h2>Parking</h2> <p>The nearest public car park is Churchill Square Car Park, BN1 2FB</p> <p>The entrance to the car park is via West Street</p>
	<p>Lighting in the car park is good</p>
	<p>There are disabled parking spaces in the car park</p>
	<p>The distance from the car park exit</p>



to the venue is approximately 30 metres



If you need help to pay press the call button



There is level access across the road



Blue Badge parking and drop offs

There are Blue Badge parking bays close to the venue on West Street.



Taxis

If you need to book an accessible taxi we recommend:

City Cabs:

Tel 01273 205205

Brighton and

Hove Radio Cabs:

Tel 01273 204060

Streamline Taxis:

Tel 01273 202020



There are free taxi phones that can be used to call a

taxi inside the venue.

A member of staff can call for you.



Buses

The nearest bus stops are outside Churchill Square shopping centre, which is up the hill.

City buses are accessible. You can use a 'Helping Hand' card to tell the driver your needs. To get a yellow card use this link: <https://www.buses.co.uk/helpinghand>

Getting into the venue



You can get into the Brighton Centre via:

The front entrance on Kings Road

From here there are lifts to take you to all the floors



The rear entrance on Russell Road
From here there are lifts to take you to any floor

You can also access the Syndicate Wing here.

Getting around the venue



You can get around the Brighton Centre by using the lifts



You can also use the stairs

In the Auditoriums, Stewards can help you get to your seat

We have an accessible map.

Use this link to download the map

[brighton-centre-access-map.pdf](https://www.brightoncentre.co.uk/brighton-centre-access-map.pdf)
([brightoncentre.co.uk](https://www.brightoncentre.co.uk))

Accessible Toilets



There are
accessible toilets
on all floors

Food and Drink



There are two main bars next to Auditorium 1

They have low counters at one end



There is a café next to the Box Office that sells hot and cold food

You can ask for a menu written in large font

Assistance Dogs



You can bring your assistance dog to the Brighton Centre

Our staff can look after the dog when you are watching the show

Sound levels & strobe lighting



The Brighton Centre can't change how loud a show is, but if you ask they can give you earplugs



Some shows will have smoke and strobe lighting

You can call and ask before the show if you are worried about this

Emergencies



If there is an emergency, there will be flashing lights and an alarm

Stewards will take you outside



If you need to use an evacuation chair the staff can help you and you can ask them

Medical Assistance & Respite Space

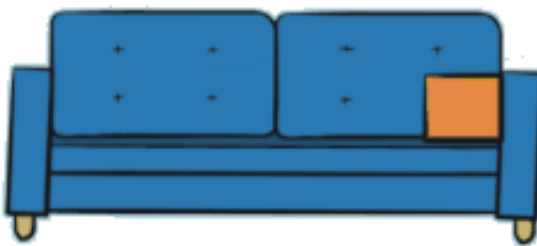


If you are ill, you can tell a steward and they will go and find someone to help you



There is a First Aid Room where you can go if you are ill.

You can ask a steward to take you there



There is a Respite Space if you want some quiet time

You can ask stewards to take you there



If you are worried or need help please speak to a steward who will help you

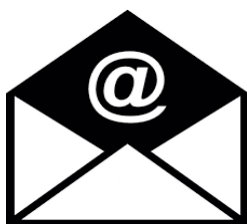
Feedback and Contacting the Brighton Centre



If you have any questions, want to tell somebody how you feel about this report or about access at the Brighton Centre you can:



Call us:
01273 292 695



Email us:
brightoncentre@brighton-hove.gov.uk



Send us a letter:
Brighton Centre
Kings Road
Brighton, BN1 2GR



Or come to see us
at the Box Office,
we would be happy
to see you